

INTERLIGHT[®]

 Solar



SOLAR TUBULAR BATTERY

210Ah



MEETS IEC 61427-1 SPECIFICATIONS

CHARGE YOUR TOMORROW

INTERLIGHT[®]



NO INTERNAL PACKING



LOW MAINTENANCE



FASTER RECHARGE



SUPERIOR VOLTAGE



PATENTED CONTAINER 287292, 287295



PARTIAL STATE OF CHARGE CONDITION



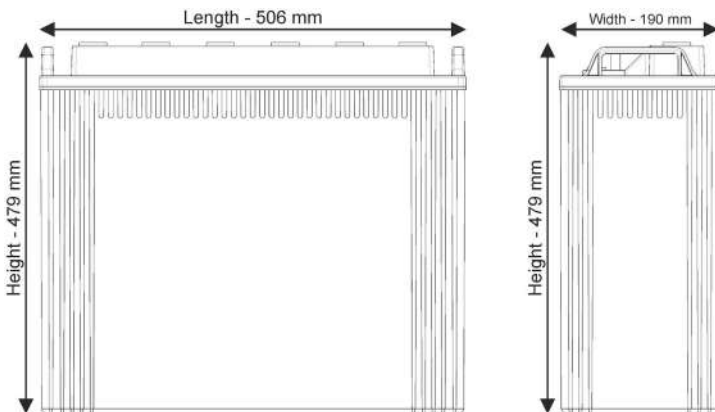
LONGER LIFE



INCREASED BACK-UP

Note: Color of the product may vary from the original color in this document.

This catalogue is issued to provide outline information only and is not deemed to form part of an offer or contract. Our policy is one of continued improvement and we reserve the right to change details without prior notice.



Range available: 210Ah

Product Features :-

1. Robust Tubular with High Pressure diecasted spine- resulting low rate of spine corrosion.
2. Spill Proof Vent plug – resulting in no spillage on top and low controlled acid fumes.
3. Optimized Negative paste receipt for fast charge acceptance
4. Consistent backup throughout life
5. Excellent behavior in PSOC condition as compare
6. Low Self Discharge
7. Excellent performance on deep cyclic application as compare to AGM VRLA
8. Patented Design & Service Life
9. Low water loss
10. Long Cycles (1500@80% DOD)

TECHNICAL DATA

Type Of Battery	Normal Voltage	Capacity@C10at 27°C-Ah	Dimensions mm (LxWxH)+/-3mm	Gross Battery weight+/-3% [Kg]	Battery Layout
SR21060IT	12	210	506X190X479	72	- □ □ □ □ □ □ +

Technical Specifications Are Subject To Change Without Prior Notice.

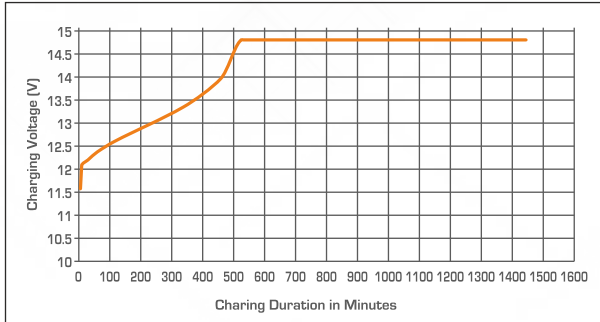
Conditions Apply*

Electrical Parameters & Charging Profile

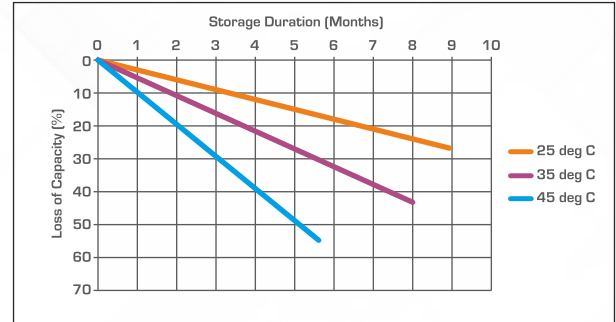
Battery Specified Capacity Test @ 27°C				
MODEL	C10 @ 10.5V	C5 @ 10.5V	C3 @ 10.5V	C1 @ 10.5V
SR21060IT (12 V 210AH @ C10)	210	190	170	118
Ah & Wh Efficiency				
Ah Efficiency	>90%	Wh Efficiency	>75%	

- **Poly Components Material:** Polypropylene Co polymer
- **Watering system :** Individual to every cell in Monobloc
- **Color :** Blue
- **Testing Parameters :** IS 13369:1992 & IEC 61427

Charging Profile



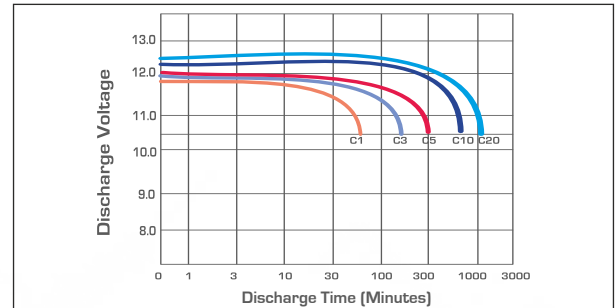
Self Discharge Characteristics @ Different Temperature



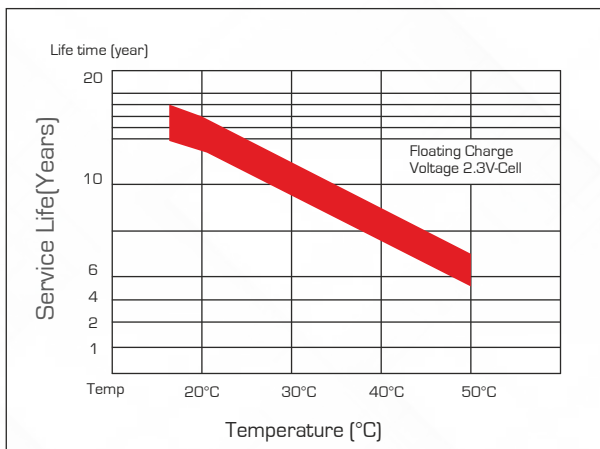
State of Charge Measure of Open-circuit Voltage @ 27°C

State of Charge	Specific Gravity	Voltage
100%	1.240±10	12.55V-12.70V
75%	1.125±10	≤12.4V
50%	1.200±10	≤12.1V
25%	1.175±10	≤12.0V
0%	1.150±10	11.8V

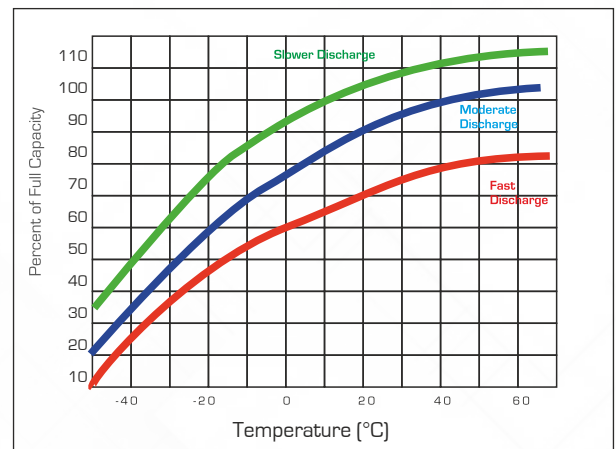
Discharging Characteristics at various rates @ 27°C



Service (Float) Life and Temperature



Expected Capacity vs Temperature



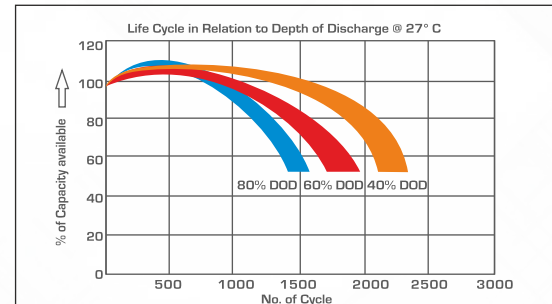
Interlight Battery Manufacturing Certified by



Specific Gravity & Self Discharge w.r.t. Temperature

	Add	Subtract
CHARGING TEMPERATURE COMPENSATION	0.005 volt per cell for every 1°C below 25°C 0.0028 volt per cell for every 1°F below 77°F	0.005 volt per cell for every 1°C above 25°C or 0.0028 volt per cell for every 1°F above 77°F
OPERATIONAL DATA	Operating Temperature	Self Discharge
	-4°F to 131°F (-20°C to +55°C) At temperatures below 32°F (0°C) maintain a state of charge greater than 60%.	As per discharge Graph

Expected Life

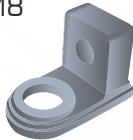


Charging Instructions

Charger Voltage Settings (at 77° F/ 25°C)			
System Voltage	12V	24V	48V
Maximum Charge Current	0.2C10		
Maximum Absorption Phase Time (hours)	4		
Absorption Voltage	14.4	28.8	57.6
Float Voltage	13.6	27.2	54.4
Equalization Voltage	16	32	64
Do not install or charge batteries in a sealer or non-ventilated compartment. Constant under or overcharging will damage the battery and shorten its life as with any battery.			
Periodic Charge	Provide a periodic freshening charge to maintain a SOC greater than the threshold of 70%		

Terminal Configuration

Terminal Type : L
Terminal Height : 26.5 mm
Terminal Width : 25.7 mm
Terminal Length : 42 mm
Bolt Type : M8



Transport Vent Plug Type

MF Locking

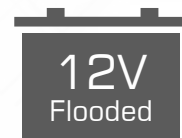
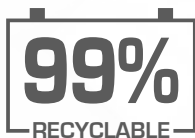


Flot Type

Locking Flot indicator cum watering lid for each cell



Recycle Responsibly



© 2022 Interlight Technologies Private Limited. All rights reserved. Interlight Technologies Private Limited is not liable for damages that may result from any information provided in or omitted from this publication, under any circumstances. Interlight Technologies Private Limited reserves the right to make adjustments to this publication at any time, without notice or obligation.



IEC Meets IEC 61427-1 Specifications

INTERLIGHT TECHNOLOGIES PRIVATE LIMITED
 Khasra Number 6295/1795/2 Abadi Freedom Nagar Sant Avenue Vakia
 Rakba Sultanwind, Amritsar, Amritsar, Punjab, India, 143001
 +91-9877375736 | sales@interlightglobal.com

ITPL/2023/DS/IB/210

For more information or questions, please visit WWW.INTERLIGHTGLOBAL.COM

©2022 INTERLIGHT TECHNOLOGIES PRIVATE LIMITED. All Rights Reserved.