



SOLAR TUBULAR BATTERIES

50Ah to 250Ah



MEETS IEC 61427-1 SPECIFICATIONS

**CHARGE
YOUR
TOMORROW**



**NO
INTERNAL PACKING**



**LOW
MAINTENANCE**



**FASTER
RECHARGE**



**SUPERIOR
VOLTAGE**



**PATENTED CONTAINER
287292, 287295**



**PARTIAL STATE OF
CHARGE CONDITION**



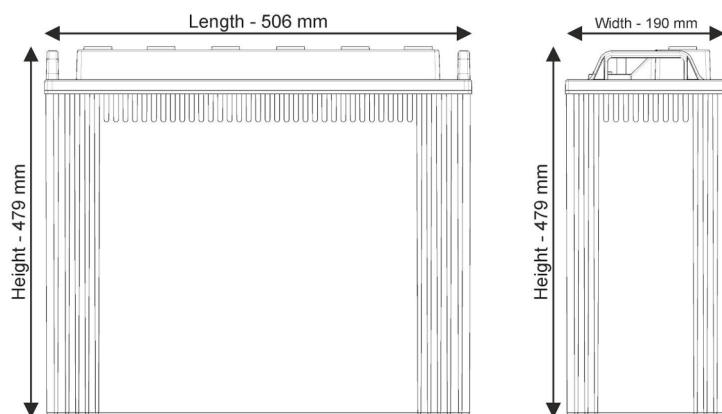
**LONGER
LIFE**



**INCREASED
BACK-UP**

Note: Color of the product may vary from the original color in this document.

This catalogue is issued to provide outline information only and is not deemed to form part of an offer or contract. Our policy is one of continued improvement and we reserve the right to change details without prior notice.



Range available: 50Ah to 250Ah

Product Features :-

1. Robust Tubular with High Pressure diecasted spine- resulting low rate of spine corrosion.
2. Spill Proof Vent plug – resulting in no spillage on top and low controlled acid fumes.
3. Optimized Negative paste receipt for fast charge acceptance
4. Consistent backup throughout life
5. Excellent behavior in PSOC condition as compare
6. Low Self Discharge
7. Excellent performance on deep cyclic application as compare to AGM VRLA
8. Patented Design & Service Life
9. Low water loss
10. Long Cycles (2000@80% DOD)

TECHNICAL DATA

Type of Battery	Nominal Voltage	Capacity@C10at 27°C-Ah	Dimensions mm (LxWxH)+/-3mm	Gross Battery weight+/-3% [Kg]	Battery Layout
IL 50	12	50	410X177X275	23	-[][][][]+
IL 75	12	75	508X222X257	38	-[][][][]+
IL 100	12	100	473X190X445	52	-[][][][]+
IL 150	12	150	473X190X445	58	-[][][][]+
IL 200	12	200	506X190X479	70	-[][][][]+
IL 250	12	250	506X190X479	76	-[][][][]+

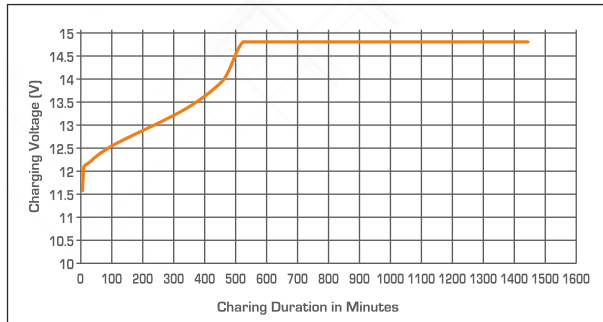
Electrical Parameters & Charging Profile

Battery Specified Capacity Test @ 27°C				
MODEL	C10 @ 10.5V	C5 @ 10.5V	C3 @ 10.5V	C1 @ 10.5V
IL 50 (12 V 50AH @ C10)	50	43	37	30
IL 75 (12 V 75AH @ C10)	75	64	54	42
IL 100 (12 V 100AH @ C10)	100	86	75	55
IL 150 (12 V 150AH @ C10)	150	127	110	85
IL 200 (12 V 200AH @ C10)	200	170	147	114
IL 250 (12 V 250AH @ C10)	250	225	192	153

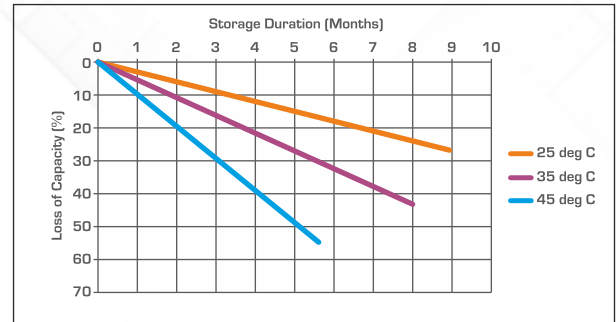
Ah & Wh Efficiency			
Ah Efficiency	>90%	Wh Efficiency	>75%

- **Poly Components Material:** Polypropylene Co polymer
- **Watering system :** Individual to every cell in Monobloc
- **Color :** Blue
- **Testing Parameters :** IS 13369:1992 & IEC 61427

Charging Profile



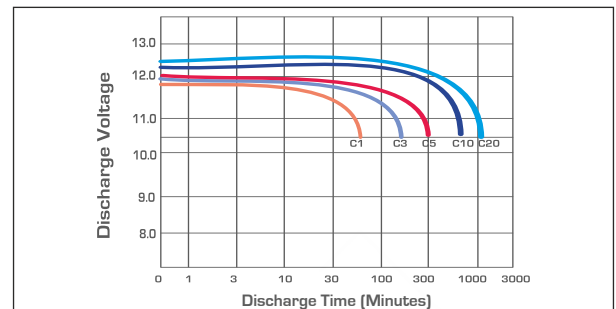
Self Discharge Characteristics @ Different Temperature



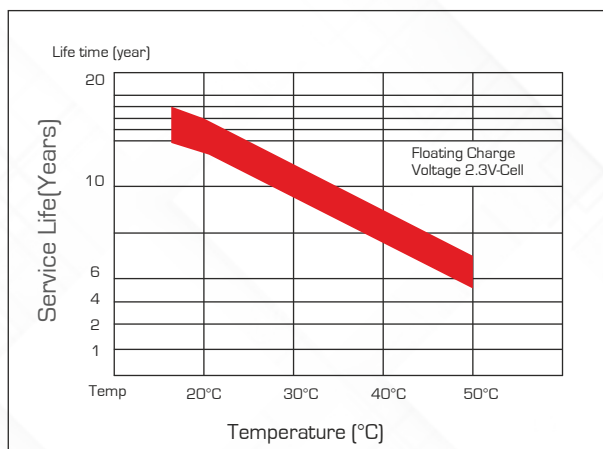
State of Charge Measure of Open-circuit Voltage @ 27°C

State of Charge	Specific Gravity	Voltage
100%	1.240±10	12.55V-12.70V
75%	1.125±10	≤12.4V
50%	1.200±10	≤12.1V
25%	1.175±10	≤12.0V
0%	1.150±10	11.8V

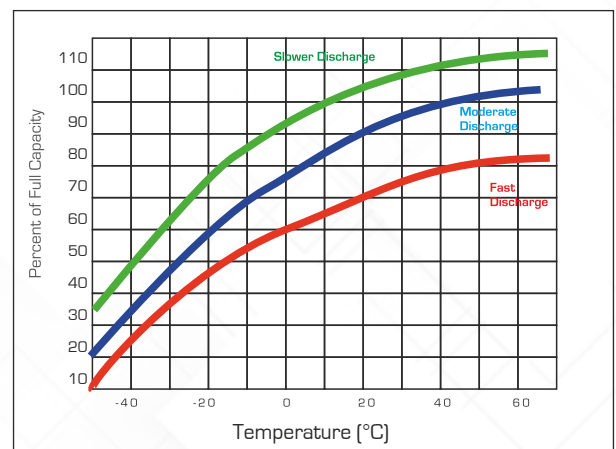
Discharging Characteristics at various rates @ 27°C



Service (Float) Life and Temperature



Expected Capacity vs Temperature



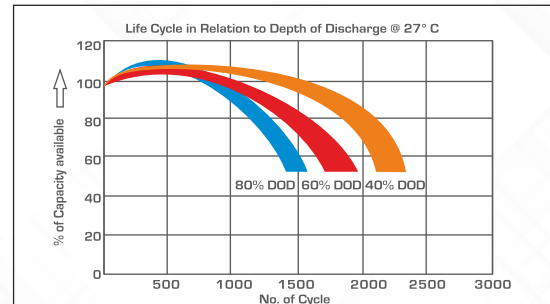
Interlight Battery Manufacturing Certified by



Specific Gravity & Self Discharge w.r.t. Temperature

	Add	Subtract
CHARGING TEMPERATURE COMPENSATION	0.005 volt per cell for every 1°C below 25°C	0.005 volt per cell for every 1°C above 25°C or
	0.0028 volt per cell for every 1°F below 77°F	0.0028 volt per cell for every 1°F above 77°F
OPERATIONAL DATA	Operating Temperature	Self Discharge
	-4°F to 131°F (-20°C to +55°C). At temperatures below 32°F (0°C) maintain a state of charge greater than 60%.	As per discharge Graph

Expected Life

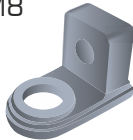


Charging Instructions

Charger Voltage Settings (at 77° F/ 25°C)			
System Voltage	12V	24V	48V
Maximum Charge Current	0.2C10		
Maximum Absorption Phase Time (hours)	4		
Absorption Voltage	14.4	28.8	57.6
Float Voltage	13.6	27.2	54.4
Equalization Voltage	16	32	64
Do not install or charge batteries in a sealer or non-ventilated compartment. Constant under or overcharging will damage the battery and shorten its life as with any battery.			
Periodic Charge	Provide a periodic freshening charge to maintain a SOC greater than the threshold of 70%		

Terminal Configuration

Terminal Type : L
Terminal Height : 26.5 mm
Terminal Width : 25.7 mm
Terminal Length : 42 mm
Bolt Type : M8



Flot Type

Locking Flot indicator cum watering lid for each cell



Recycle Responsibly



© 2023 Interlight Technologies Private Limited. All rights reserved. Interlight Technologies Private Limited is not liable for damages that may result from any information provided in or omitted from this publication, under any circumstances. Interlight Technologies Private Limited reserves the right to make adjustments to this publication at any time, without notice or obligation.



IEC Meets IEC 61427-1 Specifications

INTERLIGHT TECHNOLOGIES PRIVATE LIMITED
 Khasra Number 6295/1795/2 Abadi Freedom Nagar Sant Avenue Vakkia
 Rakba Sultanwind, Amritsar, Amritsar, Punjab, India, 143001
 +91-9877375736 | sales@interlightglobal.com

ITPL/2024/DS/IB/002

For more information or questions, please visit **WWW.INTERLIGHTGLOBAL.COM**

©2022 INTERLIGHT TECHNOLOGIES PRIVATE LIMITED. All Rights Reserved.