

INTERLIGHT[®]

CHARGE YOUR TOMORROW

50Ah to 400Ah



Power That Keeps You Moving Durable, Reliable & Unstoppable

Tall Tubular Batteries For Inverter & Solar

CHARGE
YOUR
TOMORROW

INTERLIGHT[®]



NO
INTERNAL PACKING



LOW
MAINTENANCE



FASTER
RECHARGE



SUPERIOR
VOLTAGE



PATENTED CONTAINER
287292, 287295



PARTIAL STATE OF
CHARGE CONDITION



LONGER
LIFE



INCREASED
BACK-UP

MEETS IEC 61427-1 SPECIFICATIONS

Note: Color of the product may vary from the original color in this document.

This catalogue is issued to provide outline information only and is not deemed to form part of an offer or contract. Our policy is one of continued improvement and we reserve the right to change details without prior notice.

Features

- Special Selenium alloy grid, casted at high pressure by pressure dye casting machine (PDC) for void free structure to provide longer life.
- 99.99% pure active material with finest quality red lead.
- Extra strong, flexible oxidation-resistant gauntlet for higher performance.
- Special Thick P.E separators are used to increase the efficiency & life.

Benefits

- Long design life
- Very low maintenance
- Can handle extreme weather conditions
- Rugged Performance
- Longer life without charging



Range available: 50Ah to 400Ah

TECHNICAL DATA

TALL TUBULAR BATTERIES

Type of Battery	Nominal Voltage	Capacity	Dimensions mm (LxWxH)+/-3mm	Gross Battery weight+/-3% [Kg]	Battery Layout	Batteries Per Pallet [Pcs.]	Pallet Weight [Kg]
IL 50 PREMIUM	12	50	473X190X445	40	- [] +	22	920
IL 75 PREMIUM	12	75	473X190X445	45	- [] +	22	1030
IL 100 PREMIUM	12	100	473X190X445	50	- [] +	22	1140
IL 150 PREMIUM	12	150	506X190X479	60	- [] +	22	1360
IL 200 ECO	12	200	506X190X479	63	- [] +	22	1426
IL 200 PREMIUM	12	200	506X190X479	66	- [] +	22	1492
IL 200 JUMBO	12	200	506X190X479	68	- [] +	22	1536
IL 250 PREMIUM	12	250	506X190X479	71	- [] +	22	1684
IL 300 PREMIUM	12	300	506X190X479	75	- [] +	22	1756
IL 400 PREMIUM	12	400	506X190X479	80	- [] +	22	1800

Electrical Parameters & Charging Profile

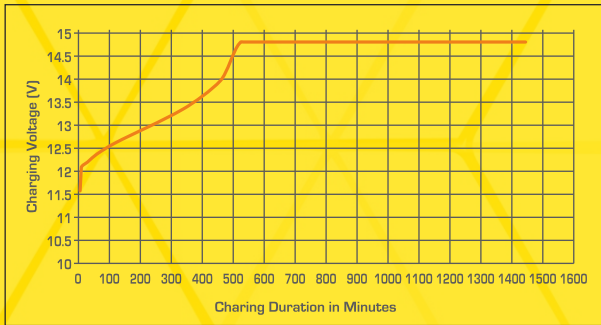
Battery Specified Capacity Test @ 27°C					
MODEL	C20 @ 10.5V	C10 @ 10.5V	C5 @ 10.5V	C3 @ 10.5V	C1 @ 10.5V
IL 50 PREMIUM (12 V 50AH @ C20)	50	44	38	32	25
IL 75 PREMIUM (12 V 75AH @ C20)	75	66	57	48	38
IL 100 PREMIUM (12 V 100AH @ C20)	100	88	75	65	50
IL 150 PREMIUM (12 V 150AH @ C20)	150	132	113	97	75
IL 200 ECO (12 V 200AH @ C20)	200	176	150	129	100
IL 200 PREMIUM (12 V 200AH @ C20)	200	180	155	133	105
IL 200 JUMBO (12 V 200AH @ C20)	200	185	160	138	110
IL 250 PREMIUM (12 V 250AH @ C20)	250	220	188	162	125
IL 300 PREMIUM (12 V 300AH @ C20)	300	264	225	195	150
IL 400 PREMIUM (12 V 400AH @ C20)	400	352	300	260	200

Ah & Wh Efficiency

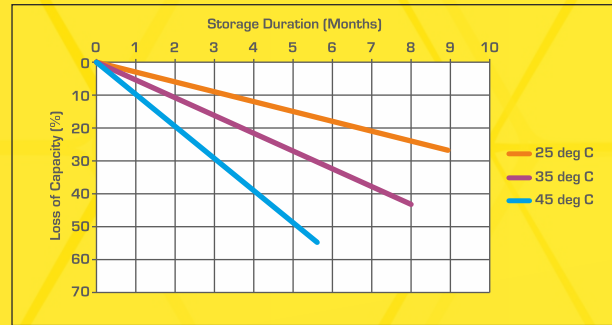
Ah Efficiency	>90%	Wh Efficiency	>75%
---------------	------	---------------	------

- **Poly Components Material:** Polypropylene Co polymer
- **Watering system :** Individual to every cell in Monobloc
- **Color :** Blue
- **Testing Parameters :** IS 13369:1992 & IEC 61427

Charging Profile



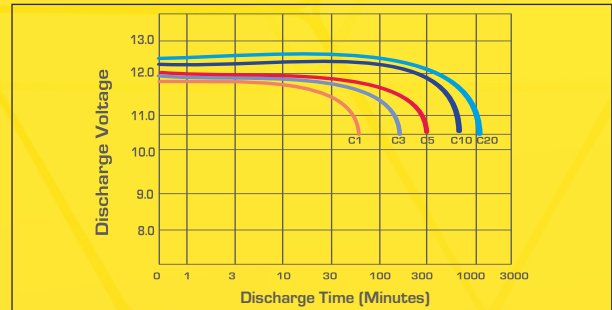
Self Discharge Characteristics @ Different Temperature



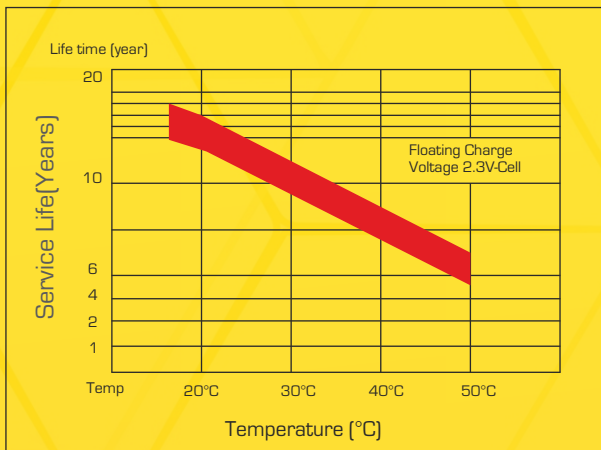
State of Charge Measure of Open-circuit Voltage @ 27°C

State of Charge	Specific Gravity	Voltage
100%	1.240±10	12.55V-12.70V
75%	1.125±10	≤12.4V
50%	1.200±10	≤12.1V
25%	1.175±10	≤12.0V
0%	1.150±10	11.8V

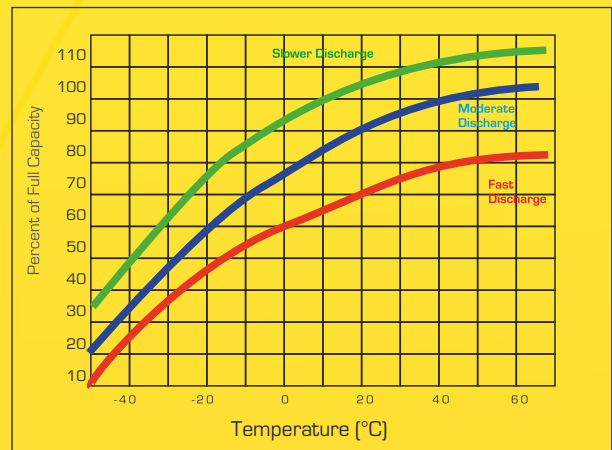
Discharging Characteristics at various rates @ 27°C



Service (Float) Life and Temperature



Expected Capacity vs Temperature



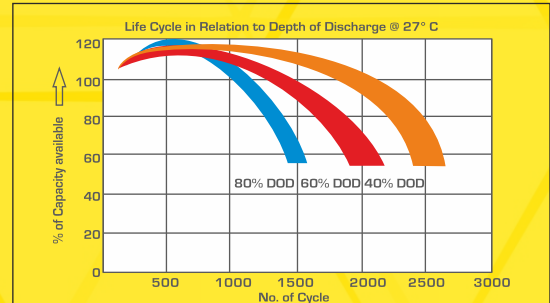
Interlight Battery Manufacturing Certified by



Specific Gravity & Self Discharge w.r.t. Temperature

	Add	Subtract
CHARGING TEMPERATURE COMPENSATION	0.005 volt per cell for every 1°C below 25°C 0.0028 volt per cell for every 1°F below 77°F	0.005 volt per cell for every 1°C above 25°C or 0.0028 volt per cell for every 1°F above 77°F
OPERATIONAL DATA	Operating Temperature	Self Discharge
	-4°F to 131°F (-20°C to +55°C) At temperatures below 32°F (0°C) maintain a state of charge greater than 60%.	As per discharge Graph

Expected Life

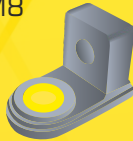


Charging Instructions

Charger Voltage Settings (at 77° F/ 25°C)			
System Voltage	12V	24V	48V
Maximum Charge Current	0.2C10		
Maximum Absorption Phase Time (hours)	4		
Absorption Voltage	14.4	28.8	57.6
Float Voltage	13.6	27.2	54.4
Equalization Voltage	16	32	64
Do not install or charge batteries in a sealer or non-ventilated compartment. Constant under or overcharging will damage the battery and shorten its life as with any battery.			
Periodic Charge	Provide a periodic freshening charge to maintain a SOC greater than the threshold of 70%		

Terminal Configuration

Terminal Type : L
Terminal Height : 26.5 mm
Terminal Width : 25.7 mm
Terminal Length : 42 mm
Bolt Type : M8



Flot Type

Locking Flot indicator cum watering lid for each cell



Recycle Responsibly

